



Sacramento Archeological Society, Inc. Newsletter

www.sacarcheology.org

July / August - 2009

“Archaeology Movie Night” FUNDRAISER & potluck

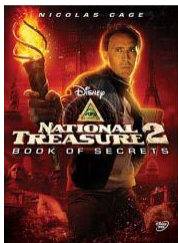
Saturday, July 11, 2009

5:30 to 9:00 p.m.

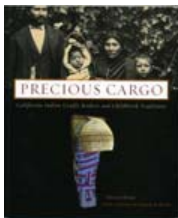
at

Roger and Lydia Peake's Home
2951 Redwood, West Sacramento, CA 95691

Join SAS for a fun and educational evening viewing of some serious (and not-so-serious!) movies on archaeology-related subjects. **SAS will raffle off a copy of “Glyphs and Graphs”, a unique book on rock art sponsored by the Bay Area Rock Art Association.** Buy your raffle ticket (\$6 for one or \$10 for two) at the door! All proceeds from ticket sales go towards the SAS Scholarship Fund. Arrive early to enjoy beverages at **5:30 pm** and a **potluck dinner will served at 6:00pm.** **Please bring your favorite dish or a snack for everyone to munch on.** Then settle in to watch the following films:



“National Treasure 2:
Book of Secrets”



“Precious Cargo: California Indian
Cradle Baskets and Childbirth Traditions”

PLUS:

A special film on the National Museum of the American Indian!

[MOVIES WILL BEGIN PROMPTLY AT 7:00PM,](#)

PLEASE ARRIVE EARLY FOR BEST SEATING!

OPEN EXCLUSIVELY TO MEMBERS OF SAS

Future SAS Events

Pheobe Hearst Museum Tour, UC Berkeley

October 2009

A tour of Pheobe Hearst Museum gallery and basket storage warehouse led by Victoria Bradshaw and Natasha Johnson is being scheduled for a Tuesday in October. **Please contact** April Farnham at april_farnham@sbcglobal.net to indicate your interest and availability.

King Tut Tour at de Young Museum

November 2009

SAS is planning a docent led King Tut tour at the de Young Museum for a Sunday in November. The museum offers early morning private group tours of the new Tut exhibit, starting at 8am. The advantages for SAS members are that we have all the museum galleries to ourselves for at least one hour before the museum opens to the public AND we have a very knowledgeable docent who can highlight parts of the exhibit (similar to the docent led tour of Afghan Treasures exhibit at the Asian Art Museum). The weekend admission ticket to de Young Museum for each adult is \$32.50. The guided tour for the group would cost an additional \$15 to \$20 depending on the number of individuals who attend. **Please contact** April Farnham at april_farnham@sbcglobal.net to indicate your interest and availability.

SAS Annual Meeting Lecture

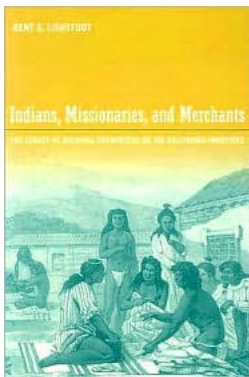
“THE ARCHAEOLOGY OF COLONIALISM”

by

Dr. Kent G. Lightfoot

Archaeologist, Author, Professor of Anthropology at UC Berkeley

Saturday, December 5, 2009



Dr. Kent G. Lightfoot has done extensive research in the areas of North American prehistory, coastal hunter-gatherer societies, the emergence of early village communities, and culture contact between Native peoples and European explorers and colonists. His work focuses on how indigenous peoples responded to European contact and colonialism, and how the outcomes of these encounters influenced cultural developments in postcolonial contexts. He employs multiple lines of evidence drawn from archaeological materials, ethnohistorical accounts, ethnographic observations and Native oral traditions to consider the implications of early contacts with European explorers and later interactions in multi-ethnic colonial communities. Much of his research has focused on the Kashaya Pomo people and their incorporation into the colonial outpost of Fort Ross that was

established by Russian merchants during the period of 1812 to 1841. He will sign copies of his book *“Indians, Missionaries, and Merchants”* (requires advanced purchase).

SAS Activity Highlights

“Painted Rock Pictograph Tour Carrizo Plain National Monument”

Saturday, May 9, 2009



Over twenty SAS members enjoyed a special hiking tour of Painted Rock in the Carrizo Plain National Monument on May 9, 2009. After viewing Soda Lake from Overlook Hill and directly examining the lake, BLM Ranger Lisa Franceschi led the group to Painted Rock. The shade and shelter of horseshoe-shaped rock was a splendid location for Native American rock painting. Chumash, Yokut, and other native peoples lived, hunted, and traded in this central region of California for thousands of years and created the pictographs as an expression of ceremonial and religious beliefs. It continues to be recognized as a sacred site. The tour was amazing. Thank you to everyone who participated!

Scholarships Awarded

SAS is pleased to announce the awarding of SAS scholarships to four very deserving students. Each will present the results of their experience to the society early in 2010.

Samuel Crenshaw, a junior at **University of California, Berkeley**, is interested in Archaeology and how it relates to the religion and philosophies of past cultures. To this end this summer he is participating in both the **Nemea and Mycenae field schools** in Greece. The scholarship will off set costs for this experience.

Sheel Jagani, a sophomore at **University of California, Berkeley**, is interested in bio-archaeology and human evolutionary studies as well as ancient civilization and cultural evolution. She will be participating in a study of the Pestas House in Mycenae to learn about archaeological planning, conservation, cataloguing and analysis. The flotation and analysis of soil samples recovered from inside ceramic wares will be her focus. The scholarship will be applied to field school costs.

Monica Nolte, an Anthropology graduate student at **San Francisco State University** has an amazing opportunity to conduct research at the Smithsonian. Her master's thesis is focused on establishing a better method for inferring activity from human remains found in archaeological sites. Currently, the analysis of muscle attachment sites and their relationship to human activity is commonly described using a 0-4 point scale developed by Hawkey and Merbs (1995). Unfortunately, this scale is insufficiently precise for valid statistical analysis, particularly involving variables such as sex and body size. Current 3D scanning technology, however, allows for more precise analysis. Monica plans to use this technology to collect data on well-preserved, complete remains of known sex and age from the Terry Collection of early 20th Century individuals that are housed at the Smithsonian Institution, Washington D. C. The scholarship will defer some of the costs associated with six weeks of work at the Smithsonian this summer.

Benjamin Harris, an Anthropology graduate student at **Sonoma State University**, is focusing on Cultural Resource Management (CRM). He is conducting Masters thesis research on public archaeology projects in San Francisco Bay Area and their relationship to CRM policy and practices. The aims of the project are to investigate implementation practices of public archaeology and how these can be improved in the context of CRM. The project also aims to assess the relative distribution of public access to these projects or their information using the concept of "underserved communities". He will be surveying groups for their public archaeology activities and then will generate an assessment map. The scholarship funds will assist in the procurement of voice recorder software to ease the transcription of multiple interviews.

Membership

The society currently has 76 members. Welcome new student members of the society: Samuel Crenshaw, Benjamin Harris, Sheel Jagani, Monica Nolte, and Alison Schwiller.

Also welcome a new Member at Large. Jeremy Johansen, webmaster, was added to the 2009 slate of Officers and Directors.

Other Upcoming Events

Maidu Interpretive Center

2009 Cultural Heritage Speaker Series

History Comes Alive!

1550 Maidu Drive

Roseville, CA 95661

Drop in, no reservations required.

7:00-8:00 pm (Doors open at 6:30pm)

July 18, 2009, Saturday – “*Native Art Around the World*” lecture by **Stan Padilla** at Maidu Interpretive Center

September 12, 2009 – *Gardening with Native Plants* lecture by **Judith Larner Lowry**, Maidu Interpretive Center.

November 14, 2009 - **Northern California Indian Veterans**, Chag Lowry, Maidu Interpretive Center

Passport in Time Archaeology Projects

Passport in Time (PIT) is a volunteer archaeology and historic preservation program of the [USDA Forest Service](#) (FS). PIT volunteers work with professional FS archaeologists and historians on national forests throughout the U.S. on such diverse activities as archaeological survey and excavation, rock art restoration, survey, archival research, historic structure restoration, oral history gathering, and analysis and curation of artifacts. The FS professional staff of archaeologists and historians will be your hosts, guides, and co-workers. For details and availability visit <http://www.passportintime.com/> and click on “Current Projects”.

June 27 – July 2, 2009 – **Passport in Time, “Weaving Connections” Project**, basket weaving & gathering with Bev Ortiz and CIBA weavers

July 9-12, 2009 - **Passport in Time (PIT) Serran Footsteps**. Camping in the Sierras experience firsthand the traditional uses of native plants, taught by Native gatherers and craftspeople.

July 13-17, July 24-26, August 10-14, August 28-30 – **Passport in Time (PIT) USDA Forest Service Project – Los Padres National Forest, “Range and Rock Art”**. This project presents a rare opportunity to see some extraordinary archaeological sites, and to learn more about how these indigenous people used the landscape of the past

August 10-14, 2009, Passport in Time (PIT) USDA Forest Service Project – Childs Meadow Excavation in Lassen National Forest, Tehama County.

Sacramento Archaeological Society, Inc.

Officers and Directors

| | | | |
|----------------|---------------------|--------------|------------------------------------------------------------------------------|
| President | April Farnham | 916/371-6806 | april_farnham@sbcglobal.net |
| Vice President | Diane Rosales | 916/371-4596 | drosales@adp.state.ca.us |
| Treasurer | Roger Peake | 916/371-6391 | rapeake@att.net |
| Secretary | Lydia Peake | 916/371-6391 | rapeake@att.net |
| Past President | Jan Johansen | 530/756-6970 | janjohansen@sbcglobal.net |
| Member @ Large | Dennis T. Fenwick | 916/373-1465 | Fenwick_lewis@msn.com |
| Member @ Large | Jeremy Johansen | 530-848-5659 | webmaster@sacarcheology.org |
| Member @ Large | Thomas Johansen, MD | 530/756-6970 | trjohansen@thegrid.net |
| Member @ Large | Ruth McElhinney | 916/923-3848 | no email |

Mark Your Calendars

June 27, 2009, Saturday – Annual CIBA Gathering, Hoopa Reservation, CA, Tish-Tang Campground. For more information visit <http://www.ciba.org/>.

July 11, 2009, Saturday – SAS “Archaeology Movie Night” at Roger and Lydia Peake’s home, 5:30 to 9:00 pm

July 13, 2009, Monday – 7:00 to 9:00 pm, Board of Directors Meeting, Roger and Lydia Peake’s home

July 18, 2009, Saturday – “Native Art Around the World” lecture by Stan Padilla at Maidu Interpretive Center

July 25, 2009, Saturday – “Tribal Trails, Wagon Wheels, and Pioneer Parties”, travel the old, scenic wagon road from Beckwourth to Genessee with Farrell Cunningham, local Maidu historian, and Dan Elliott, an archaeologist with the U.S. Forest Service. Fee and registration required through Sierra Institute for Community and Environment. For details go to www.SierraInstitute.us or call (530) 284-1022.

August 1, 2009, Saturday - “Maidu History of Indian Valley” hiking tour by Farrell Cunningham, local Maidu historian. Tour will explore historically significant sites and learn Maidu history in the valley. Fee and registration required through Sierra Institute for Community and Environment. For details go to www.SierraInstitute.us or call (530) 284-1022.

August 10, 2009, Monday, 7-9 pm - Board of Directors’ Meeting, location TBD

August 22-23, 2009 - California Archaeological Site Stewardship Program (CASSP) workshop (sponsored by the Society for California Archaeology), Hume Lake District office of Sequoia National Forest. (Limited to 25 participants) Register by phone (562) 431-0300 or email Beth Padon at bpadon@discoveryworks.com by August 15th.

September 12, 2009 – Gardening with Native Plants lecture by Judith Larner Lowry, Maidu Interpretive Center.

September 14, 2009, Monday, 7-9 pm - Board of Directors’ Meeting, location TBD

September 19, 2009, Saturday, 6-9 pm – Reception for Charley Burns’ (Yurok) art show, Maidu Interpretive Center.



A Non-Profit Corporation
P.O. Box 163287
Sacramento, CA 95816-9287